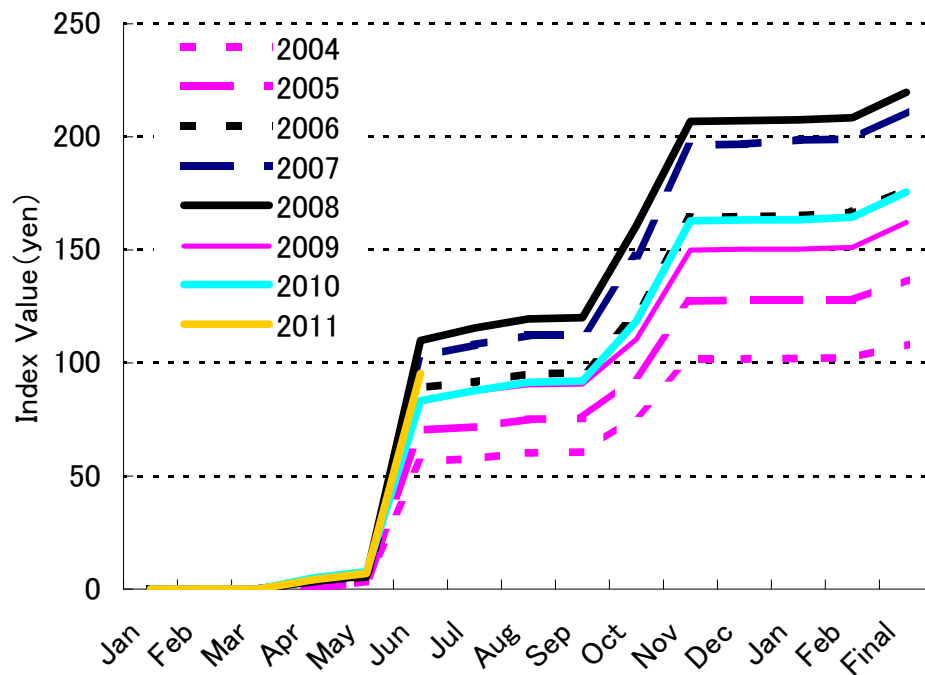


Nikkei Stock Average DP (for each year, monthly)



Nikkei Stock Average DP (Data used for the above graph)

month/year	2004	2005	2006	2007	2008	2009	2010	2011
Jan	0	0	0	0	0	0	0	0
Feb	0	0	0	0	0	0	0	0
Mar	0	0	0	0	0	0	0	0
Apr	0.52	0.58	3.31	3.38	3.40	3.78	4.85	4.14
May	3.44	3.02	5.43	5.50	5.85	6.41	7.71	6.96
Jun	56.44	70.37	89.11	102.82	109.90	82.79	83.31	95.31
Jul	57.79	71.73	91.49	107.99	115.44	87.47	87.75	
Aug	60.23	75.13	95.23	112.29	119.45	90.29	91.47	
Sep	60.62	75.55	95.64	112.29	120.06	90.70	92.00	
Oct	76.74	94.60	121.95	147.42	160.76	110.50	118.49	
Nov	101.77	127.42	164.34	196.39	206.81	149.93	162.86	
Dec	101.77	127.71	164.75	196.80	207.21	150.34	163.26	
Jan	102.00	127.71	165.08	198.61	207.56	150.34	163.26	
Feb	102.32	127.71	166.69	198.95	208.45	151.15	164.47	
Final	108.20	136.76	177.03	211.18	219.73	162.18	175.59	

Note) End-of-month basis, Final value is on the first business day of April in the subsequent year.

(Contact) Inquires on Nikkei Stock Average DP
 Index Business Office, Nikkei Inc.
 Mail: index@nex.nikkei.co.jp