

Nikkei Moat Stock Index

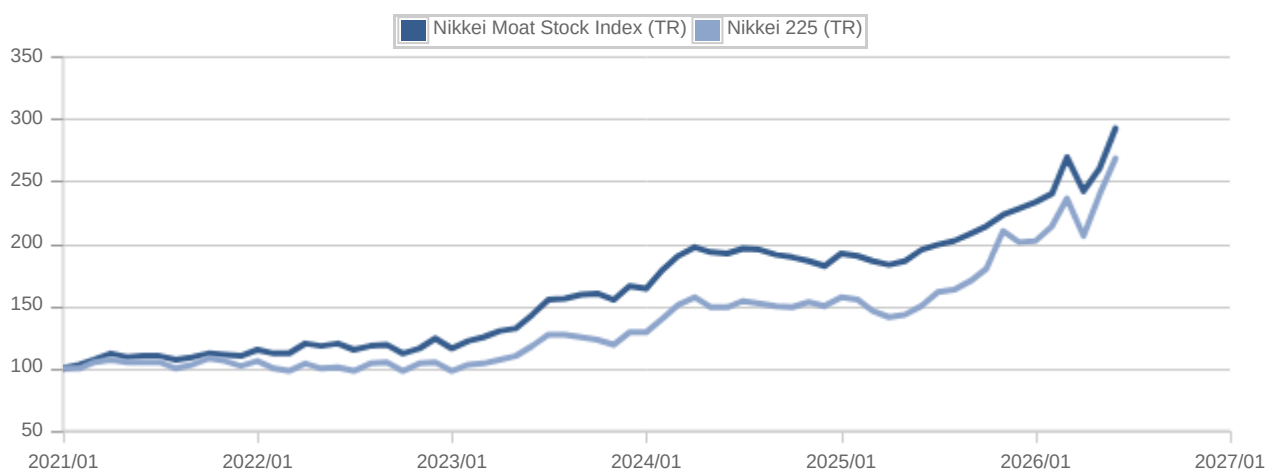
Monthly Factsheet

The Nikkei Moat Stock Index is an equal-weighted stock index composed of 30 stocks selected from among those listed on the Prime Market of the Tokyo Stock Exchange (excluding financials) that are deemed to possess an economic "moat".

■(info)

Review	Annually (July)
Stocks	30
Weight	Equal weight
Calculated from	February 9, 2026 (calculated retroactively back to July 31, 2013)
Calculation base date	July 31, 2013 = 10,000 points
Calculation frequency	End-of-day basis

■Performance



■Annual Return

	Annual Return(%)					YTD
	2021	2022	2023	2024	2025	
Nikkei Moat Stock Index (TR)	15.30	1.37	41.06	17.01	21.26	25.17
Nikkei 225 (TR)	6.66	-7.34	30.96	21.33	28.65	32.74

■Risk Return

	Annualized Returns(%)			Annualized Standard Deviation(%)		
	1year	3years	5years	1year	3years	5years
Nikkei Moat Stock Index (TR)	49.87	26.88	21.62	19.73	15.57	14.66
Nikkei 225 (TR)	77.83	31.41	20.43	28.99	21.29	19.22

■Fundamentals

	Dividend Yield(%)	PER	PBR	ROE(%)
Nikkei Moat Stock Index	1.87	19.92	2.03	10.18
Nikkei 225	1.36	24.03	2.83	11.77

(*) For the definition of each indicators, please refer to "User's Guide" on the Nikkei Indexes website.

■ Index Feature

Stocks		Market Cap(million yen)	
Number of Constituents	30	Total	234,319,728
Large-size(Mkt Cap Rank 1-100)	21	Maximum	24,534,276
Medium-size(Mkt Cap Rank 101-500)	8	Minimum	261,576
Small-size(Mkt Cap Rank 501-)	1	Average	7,810,658
(*) Ranking of TSE listed stocks		Median	4,892,950

■ Top 10 Components by weight

Company	Code	Nikkei Industry Classification	Weight(%)
MURATA MANUFACTURING CO., LTD.	6981	Electric Machinery	10.40
RENESAS ELECTRONICS CORP.	6723	Electric Machinery	5.85
TDK CORP.	6762	Electric Machinery	5.64
KYOCERA CORP.	6971	Electric Machinery	4.67
FANUC CORP.	6954	Electric Machinery	4.66
SUMITOMO CORP.	8053	Trading Companies	4.43
TOKYO ELECTRON LTD.	8035	Electric Machinery	4.41
MITSUI & CO., LTD.	8031	Trading Companies	4.18
MITSUBISHI CORP.	8058	Trading Companies	4.08
SHIN-ETSU CHEMICAL CO., LTD.	4063	Chemicals	3.78

■ Industrial Categories

Weight(%)		Stocks	
Electric Machinery	38.85	Electric Machinery	7
Trading Companies	15.67	Chemicals	5
Chemicals	13.11	Services	5
Services	9.40	Trading Companies	4
Real Estate	5.83	Retail	2
Communications	4.83	Real Estate	2
Retail	4.05	Communications	2
Foods	3.38	Foods	1
Railway & Bus	2.50	Railway & Bus	1
Marine Transport	2.38	Marine Transport	1

■ Vendor Code

		(Total Return)	(Net Total Return)
QUICK	S101#MS/NKNJ	S101#MSTR/NKNJ	S101#MSNR/NKNJ
Bloomberg	NKMOT	NKMOTTR	NKMOTNTR

■ Reference

Please refer to the "Index Guidebook" for the detail of the calculation method or constituents selection rules.
 →(URL) <https://indexes.nikkei.co.jp/en/nkave/index/profile?idx=nkmot>

(*) The data on the Monthly Factsheet are as of the end of the previous month.

<<Disclaimer>>

The Nikkei Moat Stock Index, which is calculated by a method independently developed by Nikkei Inc. (hereinafter "Nikkei"), is a copyrightable work. Nikkei owns the copyright and any other intellectual property rights in the Nikkei Moat Stock Index itself, and the method for calculating the Nikkei Moat Stock Index and the like. All ownership of trademarks and any other intellectual property rights with respect to marks representing "Nikkei Inc.," "Nikkei," and "Nikkei Moat Stock Index" belongs to Nikkei. Nikkei is not obliged to continuously publish the Nikkei Moat Stock Index, nor is it liable for any error or delay in, or discontinuation of the publication thereof. Nikkei owns the right to change the content of the Nikkei Moat Stock Index, such as the calculation method thereof, and the right to suspend the publication thereof. Nikkei does not give any warranty, nor is it responsible for any and all financial instruments and the like, which are based on, or otherwise refer to, the Nikkei Moat Stock Index.

<<Regarding this material>>

This material is a copyrightable work of Nikkei. It is prohibited to copy, reproduce, reprint, or circulate all or part of this material in any form without Nikkei's permission. This material was prepared for in-depth understanding of the Nikkei Moat Stock Index, but is not for the purpose of soliciting any sale or purchase of financial instruments and the like, which are based on, or otherwise refer to, the Nikkei Moat Stock Index. This material was prepared based on various types of information and data, which were deemed reliable as of the time of the preparation of this material. However, Nikkei is not liable for its accuracy, appropriateness, completeness, and the like. In addition, Nikkei assumes no liability for any costs or damages accrued from using information contained in this material. It is not guaranteed that this material will always be kept updated, and this material may change without any prior notice. Methods or the like different from this material may apply to the operation of indices subject to this material. In any event, the latest information disclosed by Nikkei prevails.

<<Contact>>

Nikkei
Index Business Office
index@nex.nikkei.co.jp