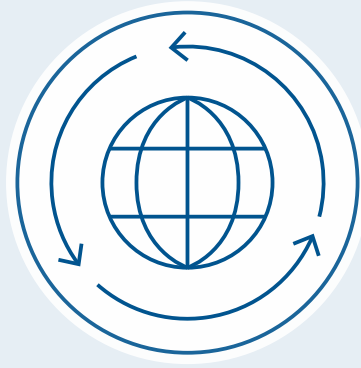


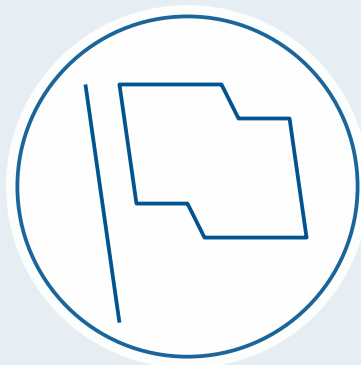
Full-featured



Transnational



High Sensitivity



Forerunner

Nikkei 225 :

The most reliable gauge for investors to measure Japan's market

The Nikkei 225 is well known as the premier index comprised of Japan's major stocks with 70 years history. It has been widely used as the indicator of Japanese equity markets. That's why the index-linked products have been created and are traded worldwide.

4 Reasons To Choose Nikkei 225

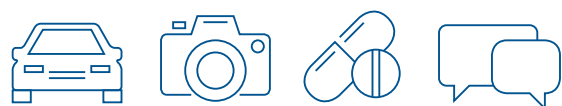


Full-featured

Nikkei 225 has its family indexes such as Volatility index and Dividend Point Index which provide the diverse insights to the investors. The users can invest in these indexes and hedge their risk by ETFs and futures contracts.

Transnational

Nikkei 225 provides high liquidities through actively traded Futures, Options and ETFs around the globe. Nikkei 225 Futures contracts have been traded for 30 years in Singapore, Osaka and Chicago.



High Sensitivity

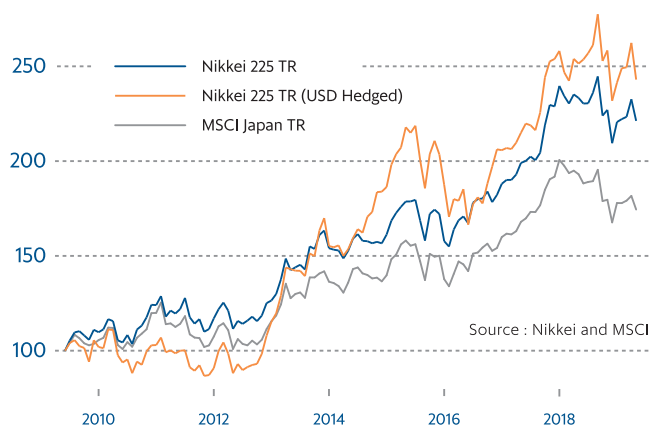
Nikkei 225 covers representative companies from major industries. It weights highly in technology sector which deploys its business globally, and is sensitive to the changes in the world economic climate.

- [Automobiles] Toyota, Honda, Nissan
- [Electric Machinery] Sony, Canon, Panasonic
- [Pharmaceuticals] Takeda, Astellas, Daiichi Sankyo
- [Communications] NTT, Softbank Group, KDDI

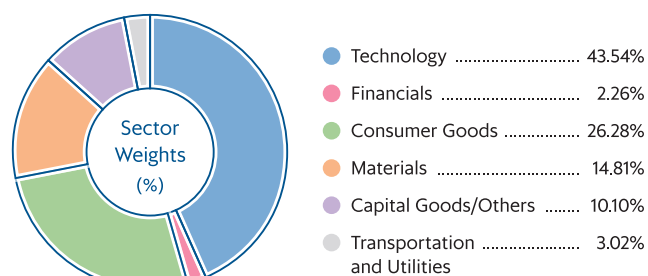
Forerunner

Nikkei 225 makes headlines throughout the world as a Japanese flagship index. Everyone can watch the index everywhere on newspaper, TV, internet etc. With Tokyo market opening fastest among the world major markets, Nikkei 225 acts as the "Forerunner" to reflect world stock market direction, especially on Mondays.

10 Year Performance



Sector Weights



(as of the end of May 2019)

Further details

<https://indexes.nikkei.co.jp/en/>

Inquiry : Index Business Office, Nikkei Inc. Email : index@nex.nikkei.co.jp

Disclaimer

Any and all copyrights of Nikkei Stock Average (Nikkei 225) as well as any and all intellectual property rights and any other rights subsisting in the indications of Nikkei 225 are owned by Nikkei Inc.